

Nage Waza Technics

| Family | Technics | 0 | 1 | 10 | 100 | Total |
|--------------|-----------------------|-----|---|----|------------|-------|
| ashi waza | Uchi mata | 121 | 8 | 7 | 7 | 143 |
| te waza | Ippon seoi nage | 92 | 8 | 3 | 1 | 104 |
| te waza | Morote | 95 | 2 | 3 | | 100 |
| koshi waza | Harai goshi | 54 | 4 | 6 | 3 | 67 |
| ashi waza | O uchi gari | 37 | 1 | 6 | 5 | 49 |
| ashi waza | Ko uchi gari | 22 | 6 | 3 | 4 | 35 |
| koshi waza | Sode tsuri | 25 | 1 | 1 | | 27 |
| sutemi waza | Sumi gaeshi | 22 | 3 | 2 | | 27 |
| ashi waza | O soto otoshi | 16 | 2 | 1 | 3 | 22 |
| te waza | Tai otoshi | 16 | 2 | 1 | 2 | 21 |
| te waza | Eri Seoi Nage | 17 | 1 | | | 18 |
| koshi waza | O goshi | 12 | 1 | 1 | 3 | 17 |
| koshi waza | Soto maki komi | 13 | 1 | 2 | 1 | 17 |
| sutemi waza | Yoko tomoe | 13 | 2 | 2 | | 17 |
| ashi waza | De ashi barai | 10 | 3 | 2 | 1 | 16 |
| counter | Tani otoshi | 8 | 2 | 3 | 3 | 16 |
| koshi waza | Koshi guruma | 10 | 4 | | 1 | 15 |
| ashi waza | O soto gari | 11 | 3 | 1 | | 15 |
| ashi waza | Ko soto gake | 8 | 4 | 1 | 1 | 14 |
| sutemi waza | Tomoe nage | 11 | 1 | | | 12 |
| sutemi waza | Uki waza | 11 | | | 1 | 12 |
| ashi waza | Sasae tsuri komi ashi | 9 | 1 | | 1 | 11 |
| te waza | Kata guruma | 8 | | 1 | | 9 |
| te waza | Uki otoshi | 3 | 4 | | 1 | 8 |
| ashi waza | Ko soto gari | 3 | | 3 | 1 | 7 |
| counter | Ura nage | 4 | | 1 | 2 | 7 |
| counter | Uchi mata gaeshi | | 1 | 4 | 1 | 6 |
| te waza | Sukui nage | 2 | 1 | | | 3 |
| koshi waza | Tsuri komi goshi | 1 | 1 | | | 2 |
| counter | Ushiro goshi | 1 | | 1 | | 2 |
| ashi waza | Hiza guruma | 1 | | | | 1 |
| ashi waza | Ko Uchi daoshi | 1 | | | | 1 |
| koshi waza | Uki goshi | | | | 1 | 1 |
| counter | counter | | | 1 | | 1 |
| TOTAL | | | | | 823 | |



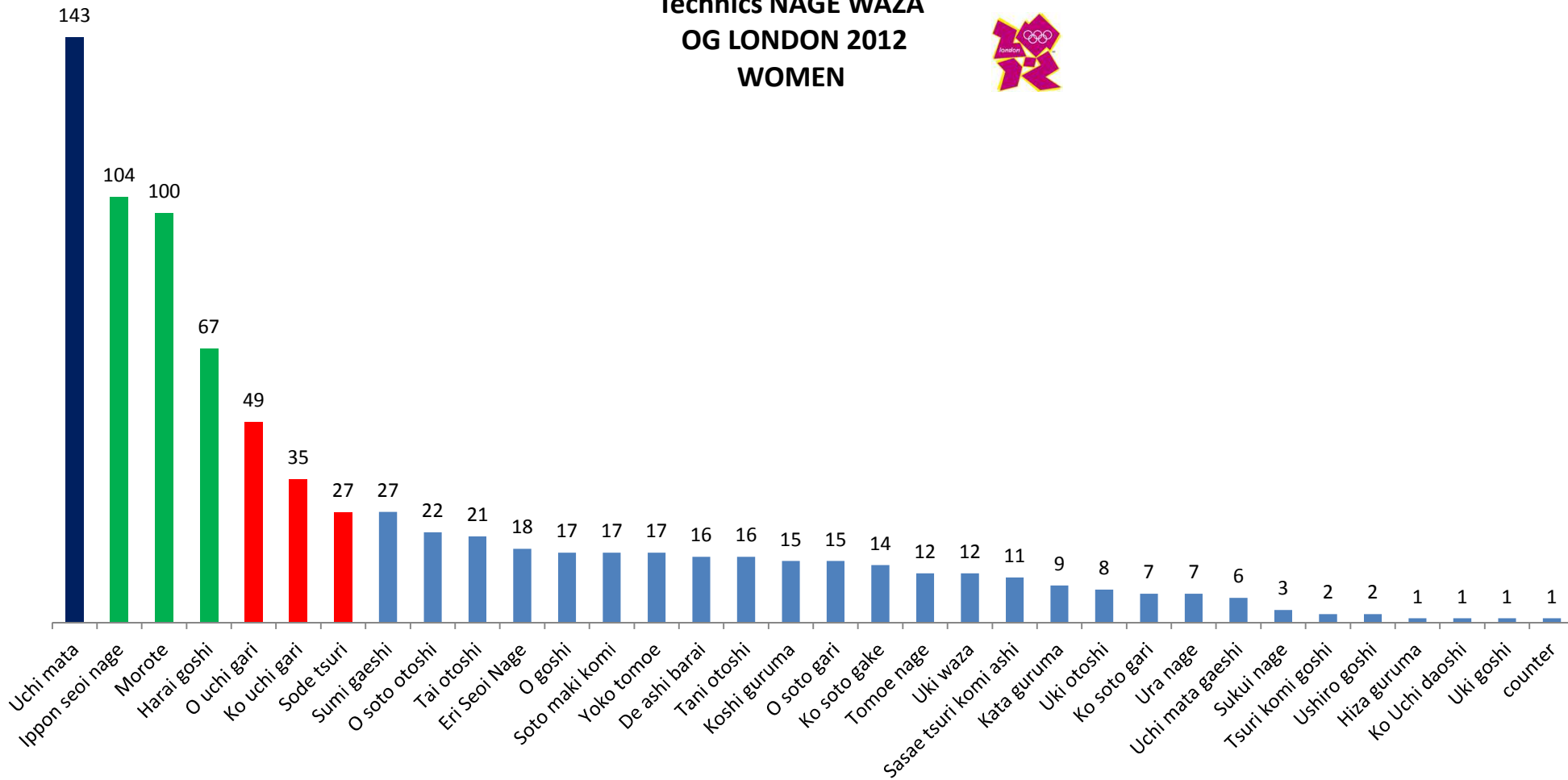
| Famille | Total |
|-------------|-------|
| ashi waza | 314 |
| te waza | 263 |
| koshi waza | 146 |
| sutemi waza | 68 |
| counter | 32 |
| 823 | |

With 33 differents technics Judo is a technical sport



data : EJU "Match Analysis Process"
LONDON 2012

Technics NAGE WAZA OG LONDON 2012 WOMEN

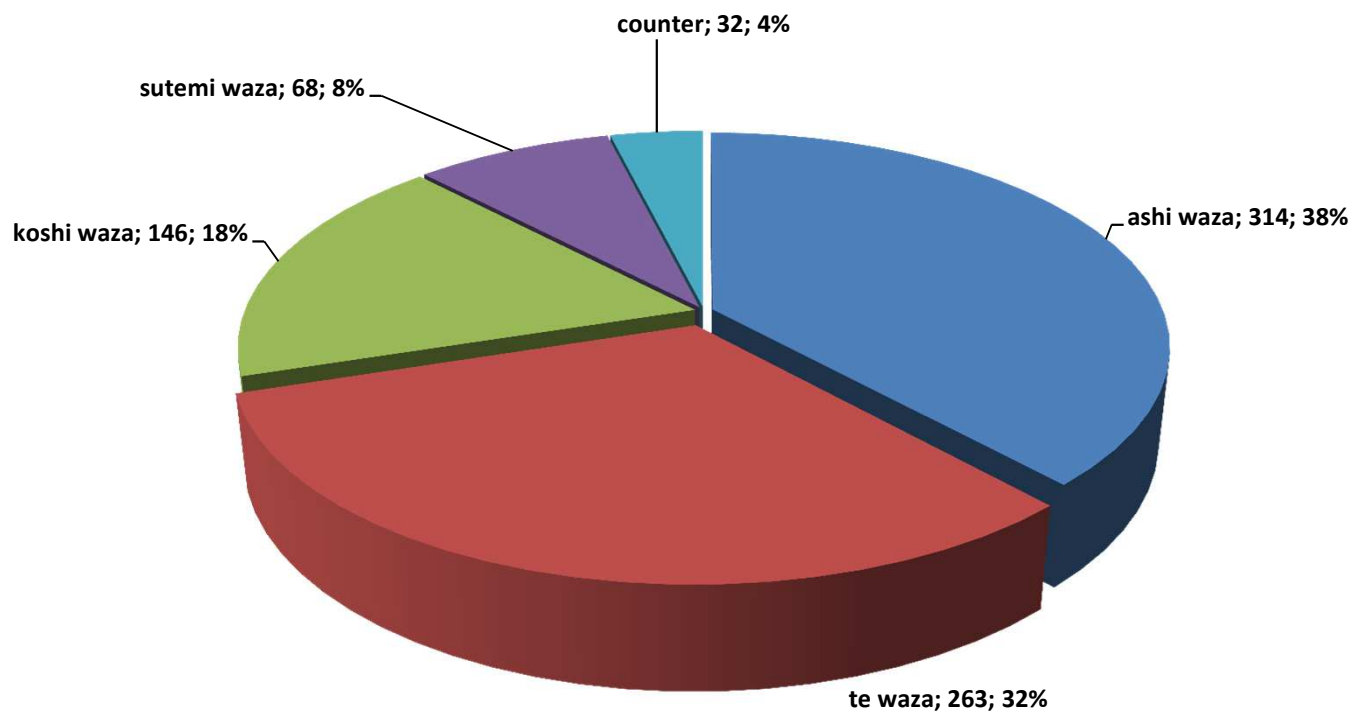


data : EJU "Match Analysis Process"
LONDON 2012





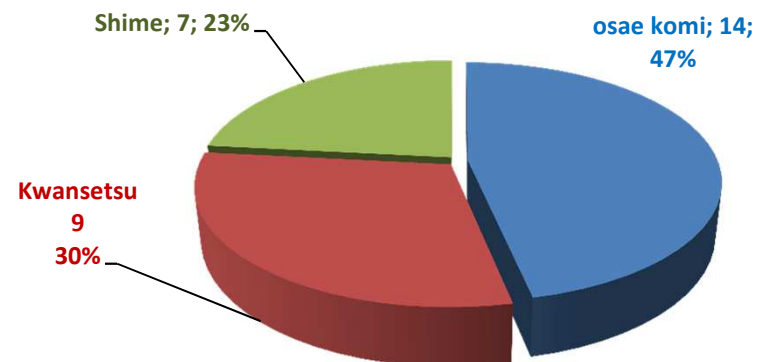
Technics Families LONDON 2012 women



data : EJU "Match Analysis Process"
LONDON 2012

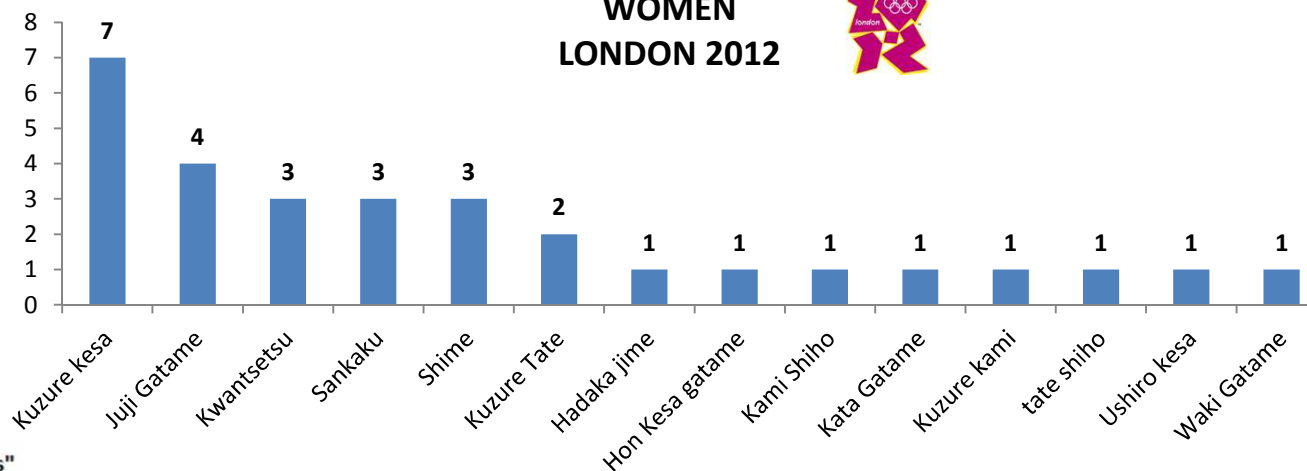
| Family | Technics | Yuko | Waza ari | Ippon | TOTAL |
|------------|-----------------|----------|----------|-----------|-----------|
| osae komi | Kuzure kesa | | 1 | 6 | 7 |
| kwantsetsu | Juji Gatame | | | 4 | 4 |
| kwantsetsu | Kwantsetsu | | | 3 | 3 |
| shime | Sankaku | | | 3 | 3 |
| shime | Shime | | | 3 | 3 |
| osae komi | Kuzure Tate | | | 2 | 2 |
| shime | Hadaka jime | | | 1 | 1 |
| osae komi | Hon Kesa gatame | | | 1 | 1 |
| osae komi | Kami Shiho | | | 1 | 1 |
| kwantsetsu | Kata Gatame | | | 1 | 1 |
| osae komi | Kuzure kami | 1 | | | 1 |
| osae komi | tate shiho | | 1 | | 1 |
| osae komi | Ushiro kesa | | | 1 | 1 |
| kwantsetsu | Waki Gatame | | | 1 | 1 |
| | | 1 | 2 | 27 | 30 |

Ne waza : Families Women LONDON 2012



| Family | Nb |
|------------|-----------|
| osae komi | 14 |
| Kwantsetsu | 9 |
| Shime | 7 |
| | 30 |

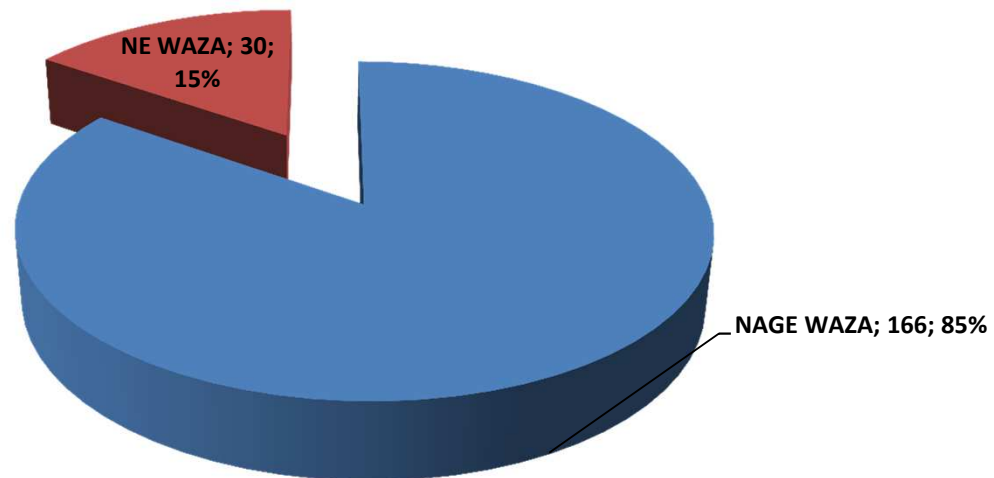
Ne waza WOMEN LONDON 2012





Nage et Ne Waza WOMEN LONDON 2012

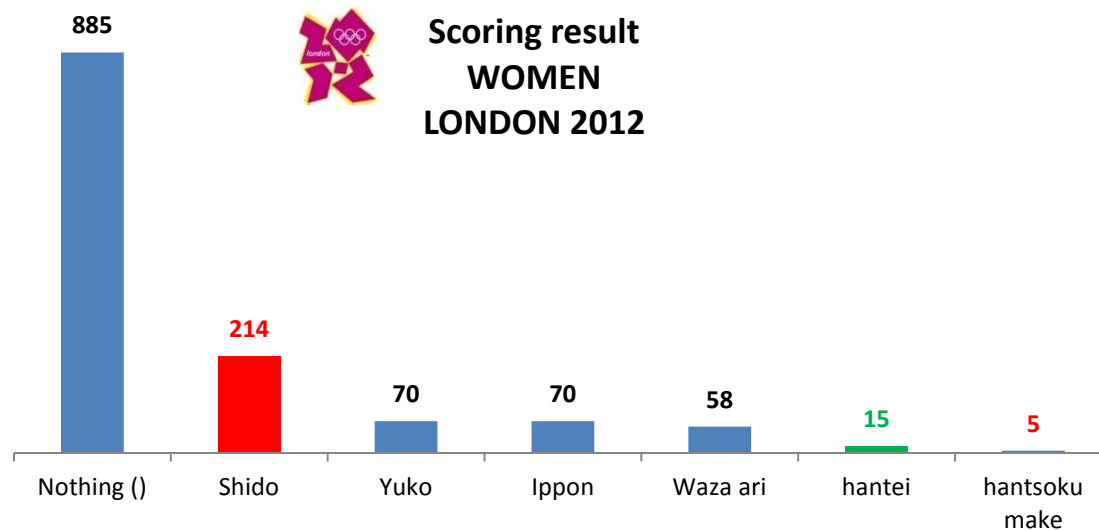
| SECTOR | Yuko | Waza ari | Ippon | TOTAL |
|-----------|------|----------|-------|-------|
| NAGE WAZA | 67 | 56 | 43 | 166 |
| NE WAZA | 1 | 2 | 27 | 30 |



data : EJU "Match Analysis Process"
LONDON 2012

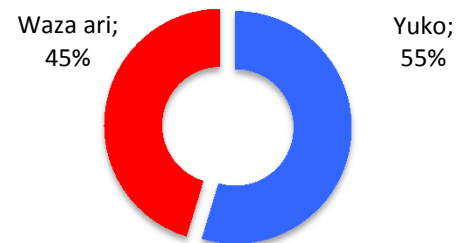
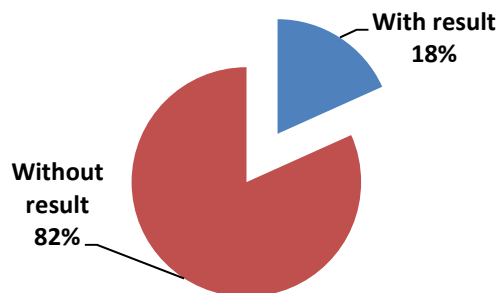
| Results | Nb |
|---------------|-----|
| Nothing () | 885 |
| Shido | 214 |
| Yuko | 70 |
| Ippon | 70 |
| Waza ari | 58 |
| hantei | 15 |
| hantsoku make | 5 |

() attack without result



| ATTACK | |
|-------------|----------------|
| With result | Without result |
| 198 | 885 |

comment
 Lot of attacks done to broke the grip
 No algorithm to prepare a technic



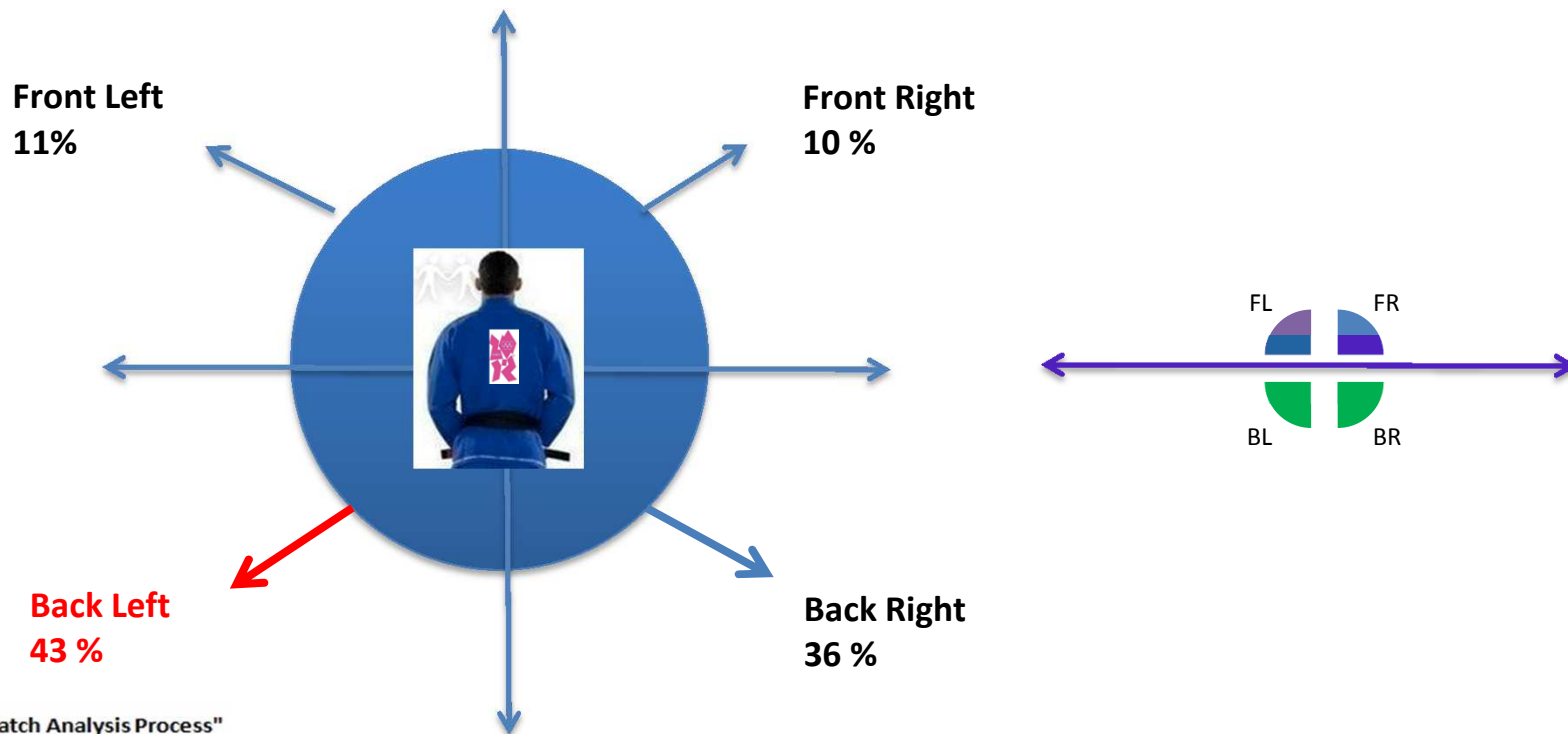
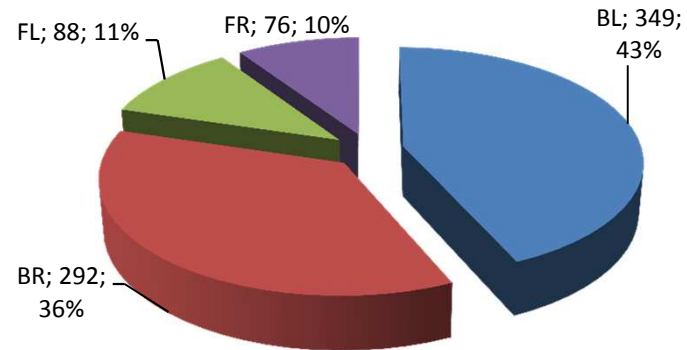
data : EJU "Match Analysis Process"
 LONDON 2012



LONDON 2012
Women

| Direction | Nb |
|-----------|-----|
| BL | 349 |
| BR | 292 |
| FL | 88 |
| FR | 76 |

protocol : Observer is Tori
Tori turns his back to attack in 79 % situations of attack



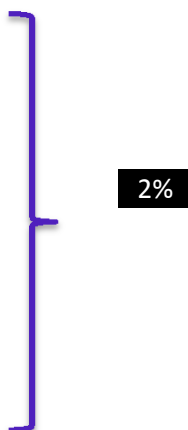
data : EJU "Match Analysis Process"
LONDON 2012



ASHI WAZA Women LONDON 2012

| Technics | 0 | 1 | 10 | 100 | Total | With score | without score | AVERAGE | |
|------------------|-----|----|----|-----|-------|------------|---------------|---------|-----|
| Uchi Mata | 121 | 8 | 7 | 7 | 143 | 22 | 121 | 15% | |
| O uchi gari | 37 | 1 | 6 | 5 | 49 | 12 | 37 | 24% | |
| Ko uchi gari | 22 | 6 | 3 | 4 | 35 | 13 | 22 | 37% | |
| O soto otoshi | 16 | 2 | 1 | 3 | 22 | 6 | 16 | 27% | |
| De ashi barai | 10 | 3 | 2 | 1 | 16 | 6 | 10 | 38% | |
| O soto gari | 11 | 3 | 1 | | 15 | 4 | 11 | 27% | |
| Ko soto gake | 8 | 4 | 1 | 1 | 14 | 6 | 8 | 43% | |
| Sasae tsuri komi | 9 | 1 | | 1 | 11 | 2 | 9 | 18% | |
| Ko soto gari | 3 | | 3 | 1 | 7 | 4 | 3 | 57% | |
| Hiza guruma | 1 | | | | 1 | 0 | 1 | 0% | |
| Ko Uchi daoshi | 1 | | | | 1 | 0 | 1 | 0% | |
| | 118 | 20 | 17 | 16 | 171 | 0 | 53 | 118 | 31% |

| Technics | AVERAGE |
|-----------------------|---------|
| Ko soto gari | 57% |
| Ko soto gake | 43% |
| De ashi barai | 38% |
| Ko uchi gari | 37% |
| O soto otoshi | 27% |
| O soto gari | 27% |
| O uchi gari | 24% |
| Sasae tsuri komi ashi | 18% |
| Uchi Mata | 15% |
| Hiza guruma | 0% |
| Ko Uchi daoshi | 0% |



Technics on the back not important for women according the efficient : 2%



data : EJU "Match Analysis Process"
LONDON 2012



TE WAZA Women LONDON 2012

| Technics | 0 | 1 | 10 | 100 | Total | With score | without score | AVERAGE |
|-----------------|----|---|----|-----|-------|------------|---------------|---------|
| Ippon seoi nage | 92 | 8 | 3 | 1 | 104 | 12 | 92 | 12% |
| Morote | 95 | 2 | 3 | | 100 | 5 | 95 | 5% |
| Tai otoshi | 16 | 2 | 1 | 2 | 21 | 5 | 16 | 24% |
| Eri Seoi Nage | 17 | 1 | | | 18 | 1 | 17 | 6% |
| Kata guruma | 8 | | 1 | | 9 | 1 | 8 | 11% |
| Uki otoshi | 3 | 4 | | 1 | 8 | 5 | 3 | 63% |
| Sukui nage | 2 | 1 | | | 3 | 1 | 2 | 33% |

| Technics | AVERAGE |
|-----------------|---------|
| Ippon seoi nage | 12% |
| Morote | 5% |
| Tai otoshi | 24% |
| Eri Seoi Nage | 6% |
| Kata guruma | 11% |
| Uki otoshi | 63% |
| Sukui nage | 33% |

} **22%**



data : EJU "Match Analysis Process"
LONDON 2012



KOSHI WAZA Women LONDON 2012

| Technics | 0 | 1 | 10 | 100 | Total | With score | without score | AVERAGE |
|------------------|----|---|----|-----|-------|------------|---------------|---------|
| Harai goshi | 54 | 4 | 6 | 3 | 67 | 13 | 54 | 19% |
| Sode tsuri | 25 | 1 | 1 | | 27 | 2 | 25 | 7% |
| O goshi | 12 | 1 | 1 | 3 | 17 | 5 | 12 | 29% |
| Soto maki komi | 13 | 1 | 2 | 1 | 17 | 4 | 13 | 24% |
| Koshi guruma | 10 | 4 | | 1 | 15 | 5 | 10 | 33% |
| Tsuri komi goshi | 1 | 1 | | | 2 | 1 | 1 | 50% |
| Uki goshi | | | | 1 | 1 | 1 | 0 | 100% |

| Technics | AVERAGE |
|------------------|---------|
| Uki goshi | 100% |
| Tsuri komi goshi | 50% |
| Koshi guruma | 33% |
| O goshi | 29% |
| Soto maki komi | 24% |
| Harai goshi | 19% |
| Sode tsuri | 7% |

} **38%**



data : EJU "Match Analysis Process"
LONDON 2012



SUTEMI WAZA Women LONDON 2012

| Technics | 0 | 1 | 10 | 100 | Total |
|-------------|----|---|----|-----|-------|
| Sumi gaeshi | 22 | 3 | 2 | | 27 |
| Yoko tomoe | 13 | 2 | 2 | | 17 |
| Tomoe nage | 11 | 1 | | | 12 |
| Uki waza | 11 | | | 1 | 12 |

| With score | without score | AVERAGE |
|------------|---------------|---------|
| 5 | 22 | 19% |
| 4 | 13 | 24% |
| 1 | 11 | 8% |
| 1 | 11 | 8% |

| Technics | AVERAGE |
|-------------|---------|
| Yoko tomoe | 24% |
| Sumi gaeshi | 19% |
| Tomoe nage | 8% |
| Uki waza | 8% |

} **15%**



data : EJU "Match Analysis Process"
LONDON 2012



COUNTER Women LONDON 2012

| Technics | 0 | 1 | 10 | 100 | Total | With score | without score | AVERAGE |
|------------------|---|---|----|-----|-------|------------|---------------|---------|
| Tani otoshi | 8 | 2 | 3 | 3 | 16 | 8 | 8 | 50% |
| Ura nage | 4 | | 1 | 2 | 7 | 3 | 4 | 43% |
| Uchi mata gaeshi | | 1 | 4 | 1 | 6 | 6 | 0 | 100% |
| Ushiro goshi | 1 | | 1 | | 2 | 1 | 1 | 50% |
| counter | | | 1 | | 1 | 1 | 0 | 100% |

| Technics | AVERAGE |
|----------|---------|
|----------|---------|

| | |
|------------------|------|
| Uchi mata gaeshi | 100% |
| counter | 100% |
| Tani otoshi | 50% |
| Ushiro goshi | 50% |
| Ura nage | 43% |

69%

Uchi mata gaeshi more important than Uchi

gaeshi 100% efficient
uchi mata 15% efficient

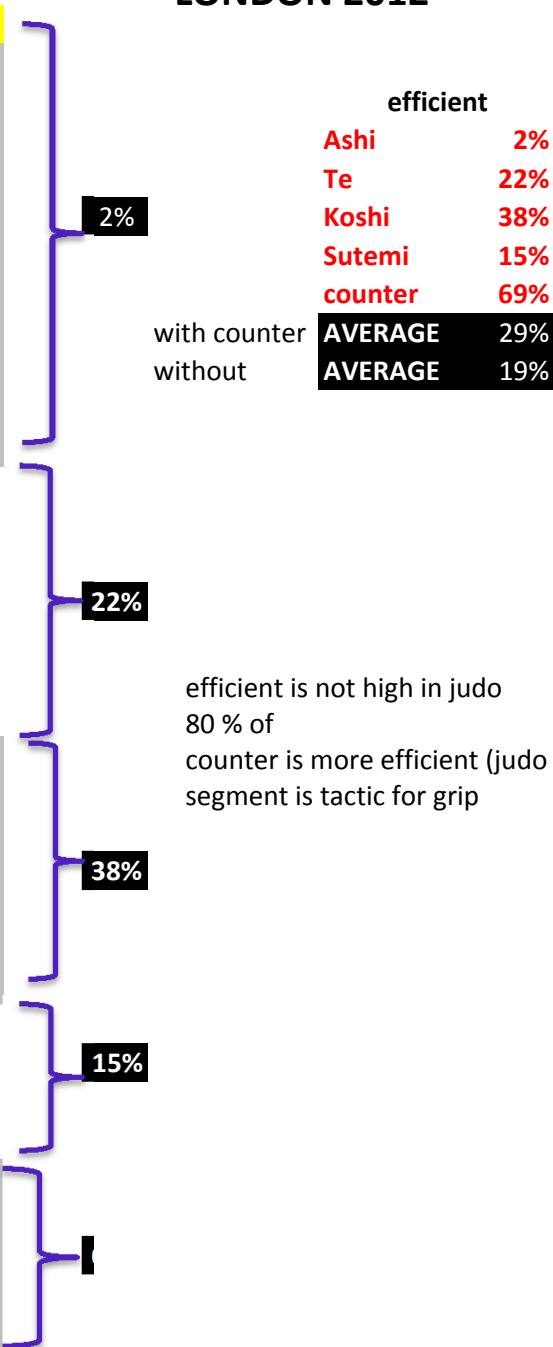


data : EJU "Match Analysis Process"
LONDON 2012



NAGE WAZA Women LONDON 2012

| Technics | AVERAGE |
|-----------------------|---------|
| Ko soto gari | 57% |
| Ko soto gake | 43% |
| De ashi barai | 38% |
| Ko uchi gari | 37% |
| O soto otoshi | 27% |
| O soto gari | 27% |
| O uchi gari | 24% |
| Sasae tsuri komi ashi | 18% |
| Uchi Mata | 15% |
| Hiza guruma | 0% |
| Ko Uchi daoshi | 0% |
| Ippon seoi nage | 12% |
| Morote | 5% |
| Tai otoshi | 24% |
| Eri Seoi Nage | 6% |
| Kata guruma | 11% |
| Uki otoshi | 63% |
| Sukui nage | 33% |
| Uki goshi | 100% |
| Tsuri komi goshi | 50% |
| Koshi guruma | 33% |
| O goshi | 29% |
| Soto maki komi | 24% |
| Harai goshi | 19% |
| Sode tsuri | 7% |
| Yoko tomoe | 24% |
| Sumi gaeshi | 19% |
| Tomoe nage | 8% |
| Uki waza | 8% |
| Uchi mata gaeshi | 100% |
| counter | 100% |
| Tani otoshi | 50% |
| Ushiro goshi | 50% |
| Ura nage | 43% |



efficient is not high in judo
80 % of
counter is more efficient (judo defensive sport?)
segment is tactic for grip



data : EJU "Match Analysis Process"
LONDON 2012



Penalties
LONDON
2012
Women

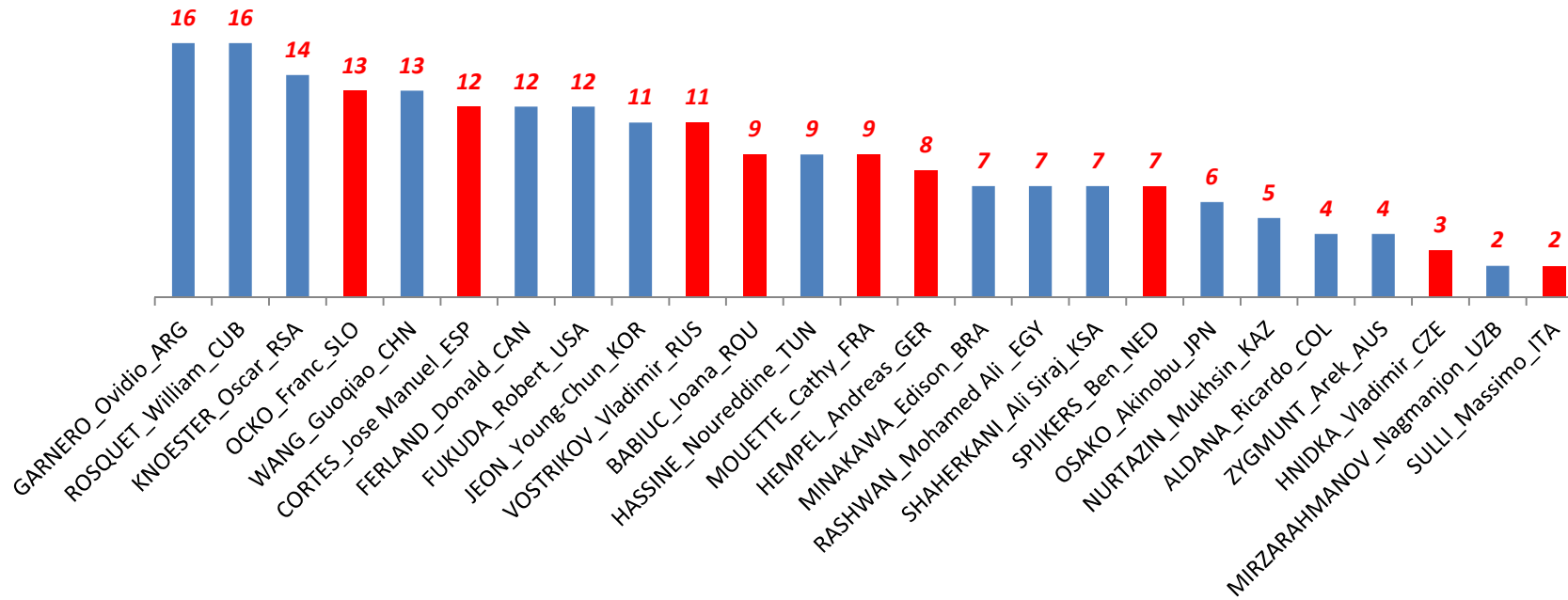
| REFEREES | Hantsoku Make | Shido | Total |
|-----------------------------|---------------|------------|------------|
| GARNERO_Ovidio_ARG | 1 | 15 | 16 |
| ROSQUET_William_CUB | 1 | 15 | 16 |
| KNOESTER_Oscar_RSA | | 14 | 14 |
| OCKO_Franc_SLO | | 13 | 13 |
| WANG_Guoqiao_CHN | | 13 | 13 |
| CORTES_Jose Manuel_ESP | | 12 | 12 |
| FERLAND_Donald_CAN | | 12 | 12 |
| FUKUDA_Robert_USA | | 12 | 12 |
| JEON_Young-Chun_KOR | | 11 | 11 |
| VOSTRIKOV_Vladimir_RUS | | 11 | 11 |
| BABIUC_Ioana_ROU | | 9 | 9 |
| HASSINE_Noureddine_TUN | 1 | 8 | 9 |
| MOUETTE_Cathy_FRA | 1 | 8 | 9 |
| HEMPEL_Andreas_GER | | 8 | 8 |
| MINAKAWA_Edison_BRA | | 7 | 7 |
| RASHWAN_Mohamed Ali_EGY | | 7 | 7 |
| SHAHERKANI_Ali Siraj_KSA | | 7 | 7 |
| SPIJKERS_Ben_NED | | 7 | 7 |
| OSAKO_Akinobu_JPN | | 6 | 6 |
| NURTAZIN_Mukhsin_KAZ | 1 | 4 | 5 |
| ALDANA_Ricardo_COL | | 4 | 4 |
| ZYGMUNT_Arek_AUS | | 4 | 4 |
| HNIDKA_Vladimir_CZE | | 3 | 3 |
| MIRZARAHMANOV_Nagmanjon_UZB | | 2 | 2 |
| SULLI_Massimo_ITA | | 2 | 2 |
| TOTAL | 5 | 214 | 219 |



data : EJU "Match Analysis Process"
LONDON 2012



Referees and penalties WOMEN LONDON 2012



data : EJU "Match Analysis Process"
LONDON 2012



**Women
LONDON 2012**

| Situation | Nb |
|------------------|-----------|
| Avoid KK | 156 |
| Grip Leg | 47 |



All together (allowed or hansoku Make)

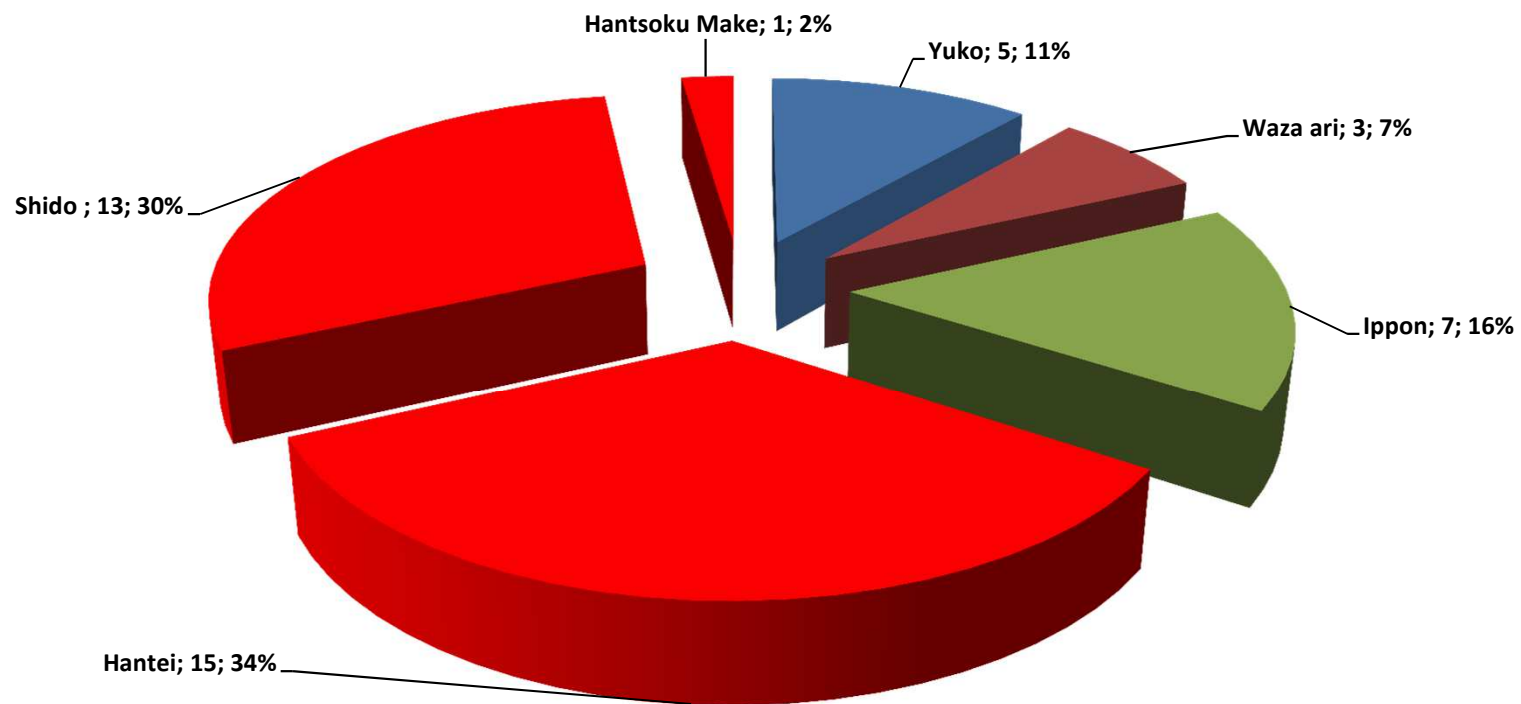


**data : EJU "Match Analysis Process"
LONDON 2012**



Golden score Women LONDON 2012

| | Yuko | Waza ari | Ippon | Hantei | Shido | Hantsoku Make | |
|--------------|------|----------|-------|--------|-------|---------------|----|
| Golden score | 5 | 3 | 7 | 15 | 13 | 1 | 44 |



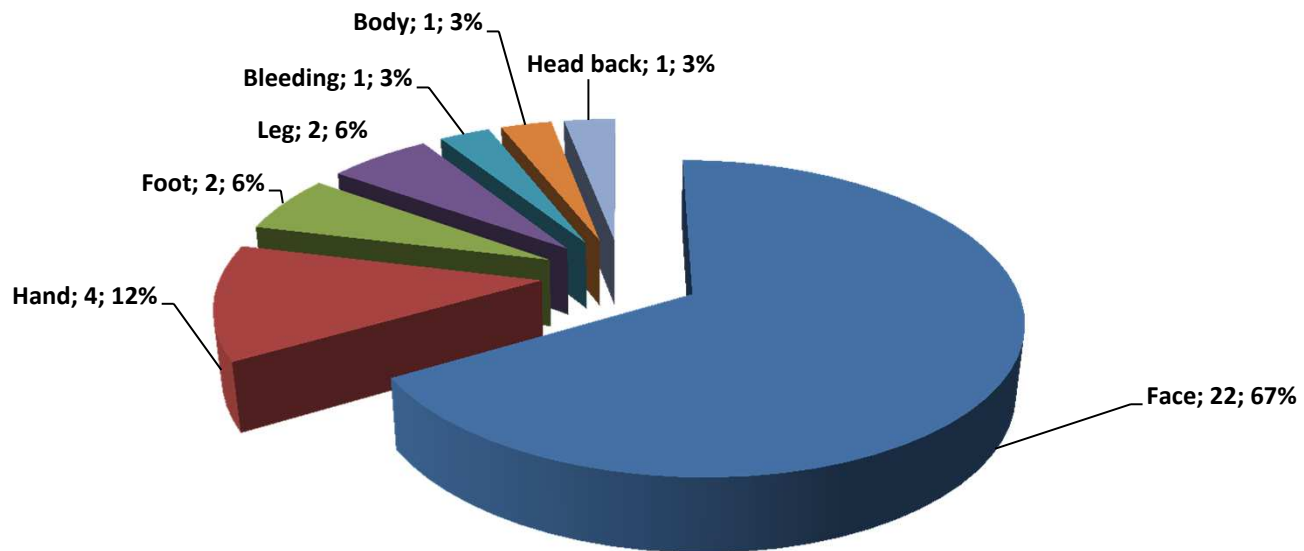
data : EJU "Match Analysis Process"
LONDON 2012



Medical WOMEN LONDON 2012

| Location | Nb |
|-----------|----|
| Face | 22 |
| Hand | 4 |
| Foot | 2 |
| Leg | 2 |
| Bleeding | 1 |
| Body | 1 |
| Head back | 1 |
| | 33 |

1. No evacuation during LONDON 2012
2. More than 100 situation where (Finger' strap) referee take elastoplast on the mat)
3. Face situation because of "Boxing before grip"



data : EJU "Match Analysis Process"
LONDON 2012